



£750 PCM

Sanrdringham Road, Stourbridge DY8 5HL

Flat | 3 Bedrooms | 1 Bathroom

01384 884 950



www.thepropertypenguin.co.uk



Step Inside

Property Description

Brand New Spacious Three Bedroom Apartment

Main Particulars

Spacious three bed first floor apartment finished to a very high specification. Situated in a desirable location close to Ashwood primary school and with amenities close by including supermarket, popular public house and country canal walks just 5 minutes away.

This bright apartment has great appeal as part of the redevelopment on Sandringham place and is one of three, the Property Penguin are delighted to offer to market.

Approaching from the rear off Sandringham Road the property has gated access to a courtyard garden or parking area with gravel chippings. The property is situated on the first floor.

The property briefly consists of entrance hallway with carpeted stairs to the first floor, the apartment is very well decorated throughout and has laminate flooring in every room. The living room offers a variation of layouts with tv points and central heating radiators and storage cupboard. The new kitchen has ample range of wall and base units in a modern grey gloss, electric oven, glass ceramic hob with extractor over and space for washing machine and fridge freezer.

There are three bedrooms all with laminate wood flooring, central heating, double glazing and vertical blinds.

The bathroom is appointed with a white modern suite with shower over bath and glass screen.

Available to rent from end September, but you would be advised if interested to register now, viewings are being taken.

The property has an energy rating of C meaning it is economical to heat and has a low environmental impact and with low energy lighting fitted in all fixed outlets.

Rent £750

Deposit £850

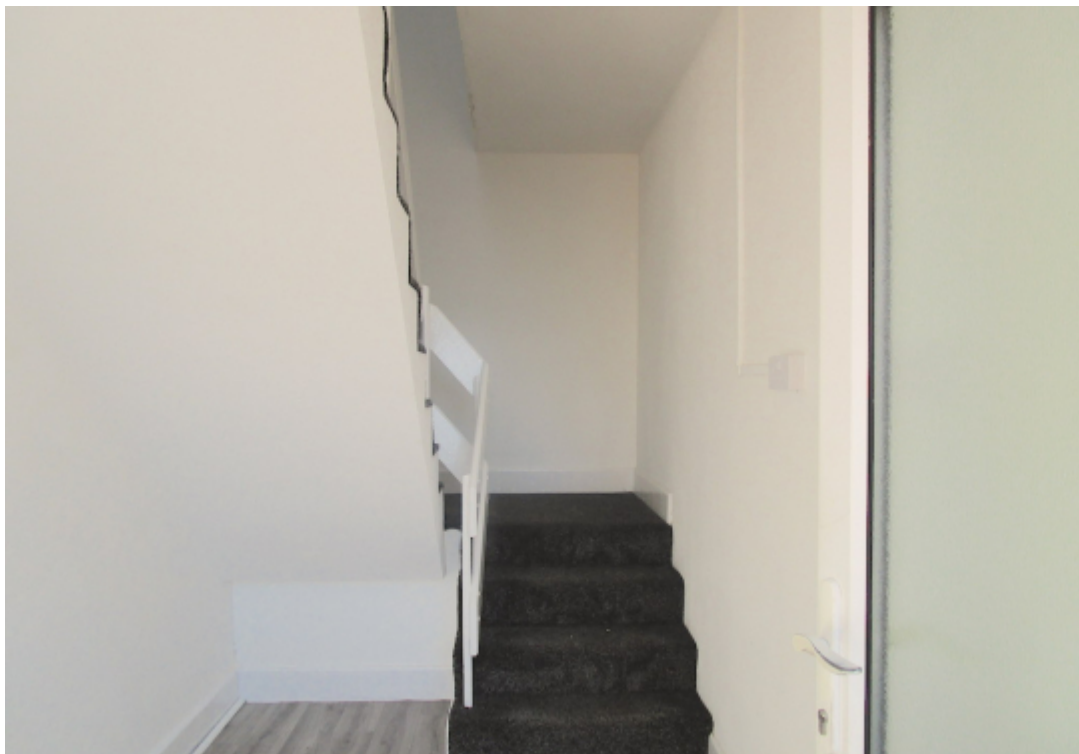




Image not found

Telephone: 01384 884 950



www.thepropertypenguin.co.uk