



£700 PCM

Wanderers Avenue, Wolverhampton WV2 3HW

Terraced House | 3 Bedrooms | 1 Bathroom

01384 884 950



www.thepropertypenguin.co.uk



Step Inside

Property Description

Recently Refurbished Three Bedroom Terraced House

Main Particulars

Lovely spacious and refurbished three bedroom family home in the centre of Blakenhall with easy access to main routes into the city centre via the A449 or A4123 approx 6mins to wolverhampton City centre. There is a choice of 3 primary schools within easy reach and supermarkets within walking distance.

The house has recently undergone a thorough and complete refurbishment throughout to include new central heating, kitchen, bathroom, windows and carpets and is neutrally decorated to a very high standard.

The downstairs briefly consists of hallway with tiled floor and neutral decor with staircase off and door to third bedroom/second sitting room.

Second sitting room is bright and airy, has new fitted carpet, tv point, radiator and bay window to the front.

The living room has double glazed window to rear garden, radiator and large pantry cupboard and leads through to the kitchen and downstairs bathroom

The brand new kitchen has ample storage with a good range of wall and base units with woodgrain effect door fronts and drawers and roll top marble effect worktops. The floor is tiled and with plumbing for washing machine, aperture for cooker and space for fridge freezer.

Through the kitchen is the bathroom which has a new modern white suite is fully tiled in beige and has shower over bath and tiled floor.

Upstairs are two large double bedrooms front and back both with new carpets, radiators and ample room for wardrobes

Its an inviting house in a good location to schools and other local amenities. Less than 10mins from the city centre.

Rent £750

Deposit £600

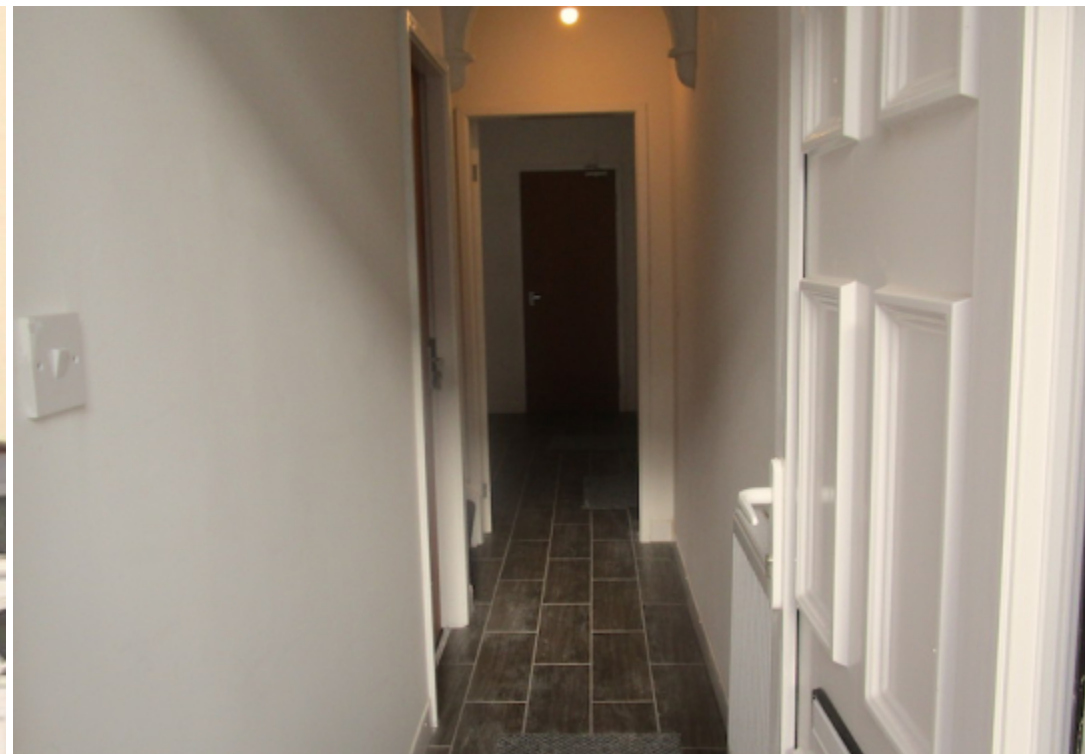




Image not found

Telephone: 01384 884 950



www.thepropertypenguin.co.uk